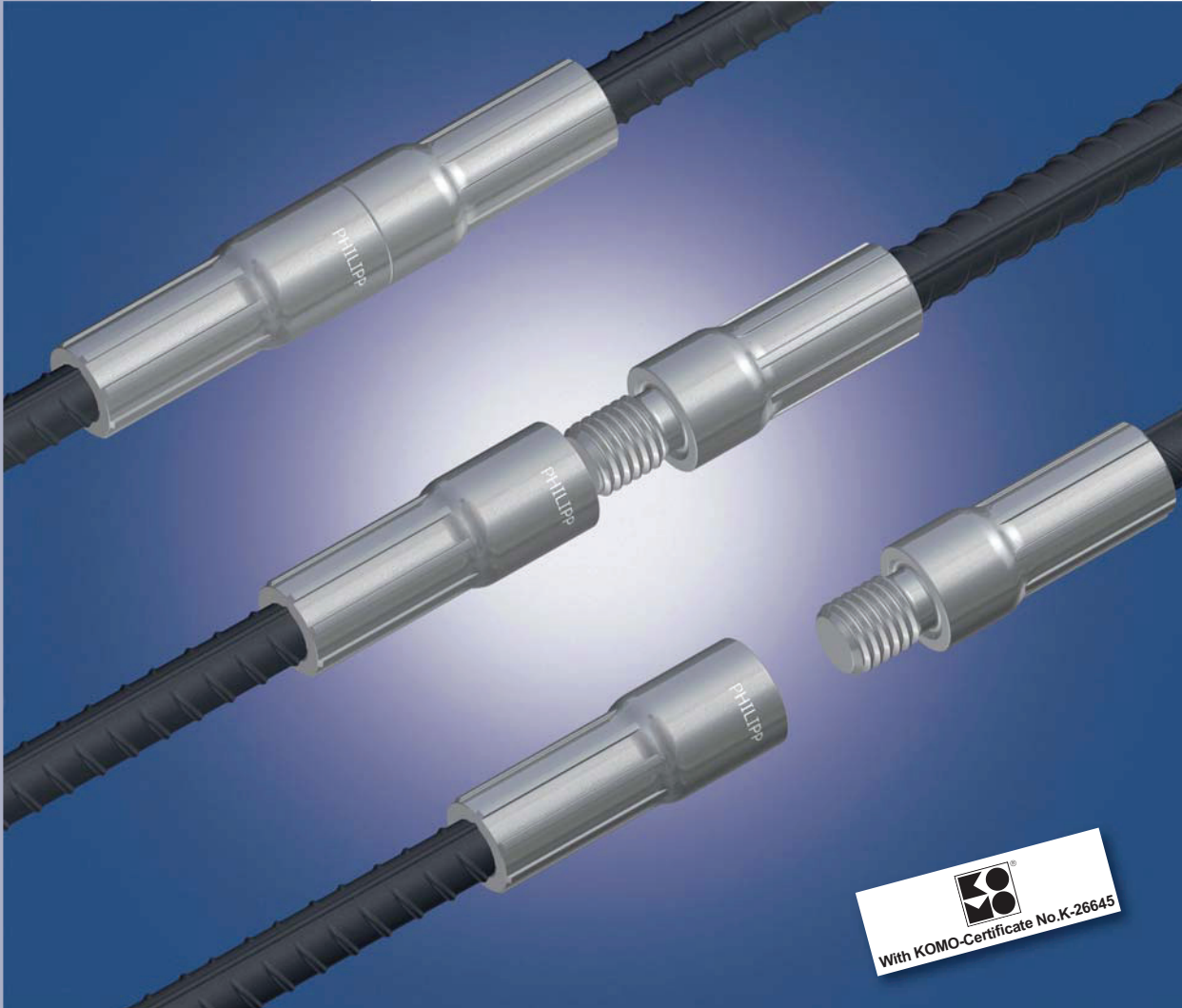




PHILIPP Splicing System

Installation Instruction



07/07 - EN

Committed. Competent. Your reliable partner.

www.philipp-group.de

INSTALLATION INSTRUCTION OF PHILIPP FIXING SYSTEM

The **PHILIPP Splicing System** consists of a rebar with crimped-on male coupler and a rebar with crimped-on female coupler.

Material:

Insert: Precision tube DIN 2391C (EN 10305-1) E 355 NBK

Rebar: FeB 500 HWL according to NEN 6008 with KOMO certificate

Dimensions:

The dimensions of the socket bars are listed in Table 1. Other lengths (L) are available on request.

Table 1: Load Bearing Capacity and Dimensions

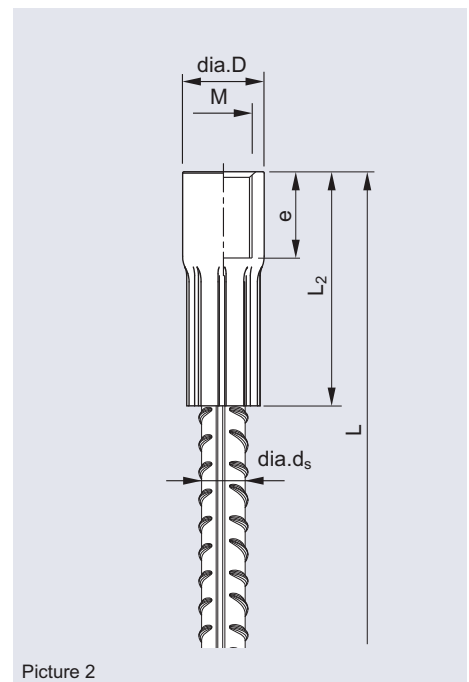
Art.-No. ①	Yield Strength ② [kN]	dia.d _s [mm]	M	dia.D [mm]	L [mm]	L ₂ [mm]	e [mm]
79BW120415	56.5	12	M16	22	415	68	25
79BW120620	56.5	12	M16	22	620	68	25
79BW120820	56.5	12	M16	22	820	68	25
79BW140685	76.9	14	M18	25	685	77	27
79BW140955	76.9	14	M18	25	955	77	27
79BW160575	100.5	16	M20	30	575	86	30
79BW160830	100.5	16	M20	30	830	86	30
79BW161050	100.5	16	M20	30	1050	86	30
79BW161470	100.5	16	M20	30	1470	86	30
79BW164055	100.5	16	M20	30	4055	86	30
79BW200725	157.0	20	M24	30	725	105	36
79BW201030	157.0	20	M24	30	1030	105	36
79BW201310	157.0	20	M24	32	1310	105	36
79BW201830	157.0	20	M24	32	1830	105	36
79BW204055	157.0	20	M24	32	4055	105	36
79BW251040	245.4	25	M30	40	1040	130	45
79BW251535	245.4	25	M30	40	1535	130	45
79BW252295	245.4	25	M30	40	2295	130	45
79BW254060	245.4	25	M30	40	4060	130	45
79BW281790	307.8	28	M36	48	1790	150	54
79BW321540	402.1	32	M42	55	1540	173	60
79BW322440	402.1	32	M42	55	2440	173	60

① socket bar dia. 25mm, dia. 28mm, dia. 32mm without certificate at the moment

② to obtain the design value of the yield strength the characteristic value has to be divided by 1.15.



Picture 1



Picture 2

INSTALLATION INSTRUCTION OF PHILIPP FIXING SYSTEM

The **PHILIPP Splicing System** consists of a rebar with crimped-on male coupler and a rebar with crimped-on female coupler.

Material:

Insert: Round bar S355J2G3

Rebar: FeB 500 HWL according to NEN 6008 with KOMO certificate

Dimensions:

The dimensions of the socket bars are listed in Table 1. Other lengths (L) are available on request.

Table 2: Load Bearing Capacity and Dimensions

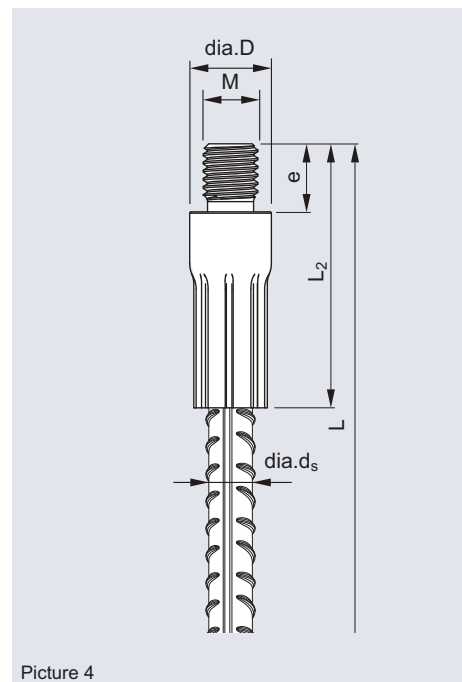
Art.-No. ①	Yield Strength ② [kN]	dia.d _s [mm]	M	dia. D [mm]	L [mm]	L ₂ [mm]	e [mm]
79BM120425	56.5	12	M16	22	425	78	20.0
79BM120625	56.5	12	M16	22	625	78	20.0
79BM120850	56.5	12	M16	22	850	78	20.0
79BM140730	76.9	14	M18	25	730	86	22.5
79BM141000	76.9	14	M18	25	1000	86	22.5
79BM160580	100.5	16	M20	30	580	97	25.0
79BM160830	100.5	16	M20	30	830	97	25.0
79BM161080	100.5	16	M20	30	1080	97	25.0
79BM161500	100.5	16	M20	30	1500	97	25.0
79BM162260	100.5	16	M20	30	2260	97	25.0
79BM200735	157.0	20	M24	32	735	115	30.0
79BM201055	157.0	20	M24	32	1055	115	30.0
79BM201370	157.0	20	M24	32	1370	115	30.0
79BM201890	157.0	20	M24	32	1890	115	30.0
79BM202290	157.0	20	M24	32	2290	115	30.0
79BM251085	245.4	25	M30	40	1085	140	37.5
79BM251610	245.4	25	M30	40	1610	140	37.5
79BM252370	245.4	25	M30	40	2370	140	37.5
79BM281860	307.8	28	M36	48	1860	157	45.0
79BM321525	402.1	32	M42	55	1525	190	52.5
79BM322450	402.1	32	M42	55	2450	190	52.5

① socket bar dia. 25mm, dia. 28mm, dia. 32mm without certificate at the moment

② to obtain the design value of the yield strength the characteristic value has to be divided by 1.15.



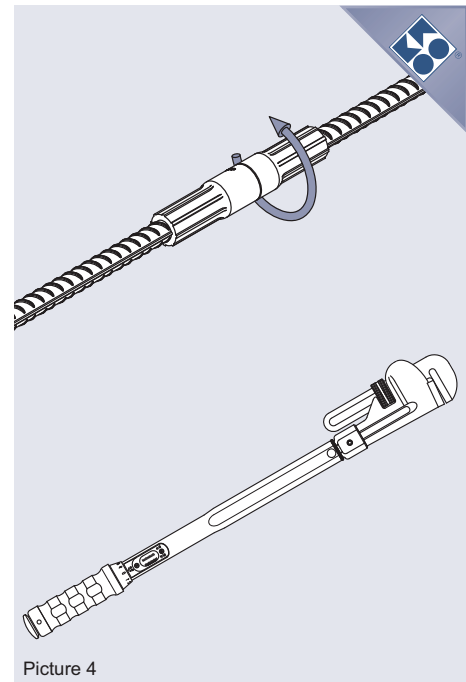
Picture 3



Picture 4

Table 3: Allowable Torque for PHILIPP Splicing System

d_s [mm]	[Nm]
12	40
14	50
16	60
20	80
25	100
28	140
32	180

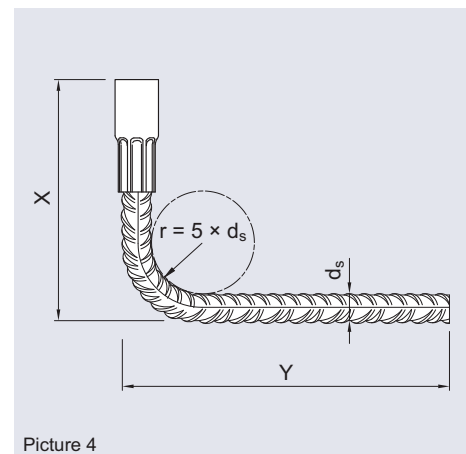


Picture 4

Table 4: Socket bar (bent version)

d_s [mm]	min. X	Z
12	150	37
14	170	43
16	195	50
20	235	62
25	295	77
28	335	86
32	390	99

$$L = X + Y - Z$$

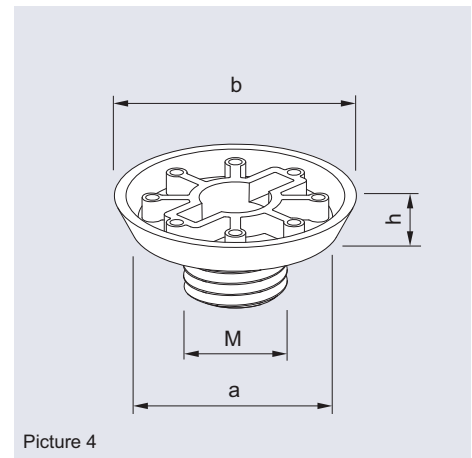


Picture 4

Accessories

Table 5: Plastic Nailing Plate

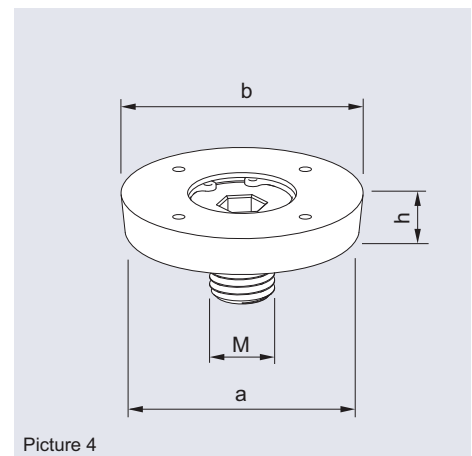
Art.-No.	d_s	M	a	b	h
72KHN16	12	16	45	55	10
72KHN18	14	18	45	55	10
72KHN20	16	20	45	55	10
72KHN24	20	24	45	55	10
72KHN30	25	30	60	70	10
72KHN36	28	36	60	70	10
72KHN42	32	42	86	96	12



Picture 4

Table 6: Steel Nailing Plate

Art.-No.	d_s	M	a	b	h
72SAT16K	12	16	58	60	10
72SAT18K	14	18	59	63	10
72SAT20K	16	20	71	74	10
72SAT24K	20	24	75	78	12
72SAT30K	25	30	92	94	12
72SAT36K	28	36	102	105	12
72SAT42K	32	42	112	115	15



Picture 4

Examples for Application

