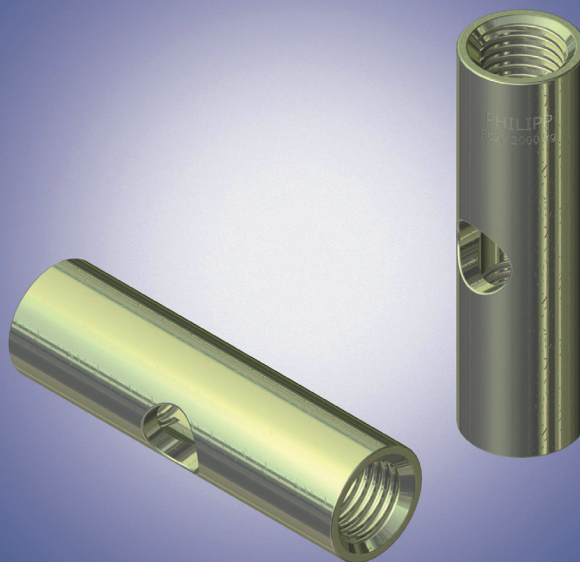




# PHILIPP Lifting Insert Double Sided

---

## Data Sheet



# DATA SHEET OF PHILIPP LIFTING INSERT DOUBLE SIDED

**PHILIPP Lifting Insert** is a lifting insert with cross hole with threads on both sides. On use of **PHILIPP Lifting Insert** attention must be paid to the general instructions for installation and use and the using instructions of **PHILIPP Lifting Devices (Wirbelstar, Lifting Loop with Threaded End, Lifty)**.

**Table 1: Load Bearing Capacity and Dimensions  
of PHILIPP Lifting Insert - double sided**

Art.-Nr.	Type RD	allow. $F_z$ [kN]	h [mm]	dia.d [mm]	PU [pcs.]	Weight [kg/100 pcs.]
71HM12D	12	5.0	60	8	100	3.5
71HM14D	14	8.0	70	10	100	6.5
71HM16D	16	1.20	80	13	100	10.0
71HM18D	18	1.60	90	13	100	15.0
71HM20D	20	2.00	95	16	50	19.0
71HM24D	24	2.50	115	19	50	28.0
71HM30D	30	4.00	145	23	25	59.0
71HM36D	36	6.30	175	27	25	100.0
71HM42D	42	8.00	205	32	10	159.0
71HM52D	52	12.50	275	40	5	330.0

**The weight of 1.0ton results in 10kN.**

If you have any further questions please visit our homepage [www.philipp-gruppe.de](http://www.philipp-gruppe.de) or contact our technical department: +49 (0) 6021 / 40 27-318 or send us an email at [technik@philipp-gruppe.de](mailto:technik@philipp-gruppe.de)

